

PPL Bill



Pay/Manage your account online at ppllectric.com

Questions? Please contact us by May 12.
1-800-DIAL-PPL
(1-800-342-5775)
 M-F: 8am to 5pm

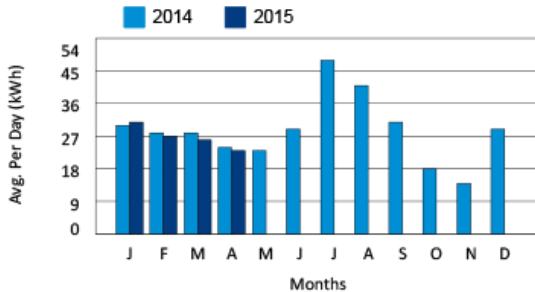
| Bill Acct. No. | Due Date | Amount Due |
|----------------|--------------|------------|
| 0000-0000 | May 12, 2015 | \$106.62 |

Your Electric Usage Profile

Service to:
 CUSTOMER
 123 MAIN ST
 ANYTOWN, PA 18062

Meter: **0000-0000**
 Your next meter reading is on or about May 18, 2015.

This section helps you understand your year-to-year electric use by month. Meter readings are actual unless otherwise noted.



| Monthly Comparison | Days Billed | kWh | Average kWh/Day | Average Temp. |
|--------------------|-------------|-----|-----------------|---------------|
| Apr 2015 | 30 | 698 | 23 | 43F |
| Apr 2014 | 30 | 734 | 24 | 44F |

| Billing Period | Type | Reading |
|----------------|------------|---------|
| Apr 17 | Actual | 19207 |
| Mar 18 | Actual | 18509 |
| 30 Days | kWh Billed | 698 |

| Yearly Comparison | Total Use | Avg. Monthly |
|---------------------|-----------|--------------|
| May 2014 - Apr 2015 | 10298 | 858 |
| May 2013 - Apr 2014 | 11208 | 934 |

Billing Summary

(Billing details on back)

| | |
|---|-----------------|
| Balance as of Apr 21, 2015 | \$0.00 |
| Charges: | |
| Total Generation & Transmission Charges | \$64.66 |
| Total Distribution Charges | \$41.96 |
| Total Current Charges | \$106.62 |
| Amount Due By May 12, 2015 | \$106.62 |
| Account Balance | \$106.62 |

How To Shop For Electricity

You can choose the company that supplies your electricity. Visit papowerswitch.com or www.oca.state.pa.us for supplier offers. If you are already shopping, know your contract expiration date.

Here's the information you need to shop:

Bill Account Number: **0000-0000** Rate Schedule: **RS (Residential)**
 Current Supplier: **Supplier ABC**

PPL Electric Utilities price to compare for your rate is \$0.09559 per kWh. This changes the 1st of June and December.

Manage Your Account

| Pay Your Bill | Online Options (ppllectric.com) |
|---|--|
| Online: Visit ppllectric.com Phone: Call 1-800-342-5775 Mail: Use envelope provided ABP: Automatic Bill Pay (see back of stub to enroll) Card: MasterCard, Discover, Visa or debit, call 1-800-672-2413 (service fee applies) | <ul style="list-style-type: none"> - Report an outage/check outage status - Make a payment, view your bill and usage history. - Sign up for alerts. - Enroll in paperless billing, automatic bill pay, budget billing. - View your rate schedule at: ppllectric.com/rates |

Correspondence:

Customer Services, 827 Hausman Road, Allentown, PA 18104-9392

Other important information on the back of this bill →

Return this stub in the envelope provided with a check payable to PPL Electric Utilities.



Sign up for Automatic Bill Pay on the back of this bill stub.

| Bill Acct. No. | Due Date | Amount Due |
|----------------|--------------|------------|
| 0000-0000 | May 12, 2015 | \$106.62 |

Amount Enclosed:

| | | | | | | | |
|--|--|--|--|--|--|--|--|
| | | | | | | | |
|--|--|--|--|--|--|--|--|

CUSTOMER
 123 MAIN ST
 ANYTOWN, PA 18062

PPL ELECTRIC UTILITIES
 2 NORTH 9TH STREET CPC-GENN1
 ALLENTOWN, PA 18101-1175

PPL Bill

- **Contact Information** Ways to contact us about your bill or account are clearly noted at the top of your bill. Many self-service options are available online.
- **Account Information** The most important information regarding your bill is placed in an account summary box on the top of the bill and payment stub.
- **Service Address** The address where PPL Electric Utilities is providing service for this bill. This address may be different than the mailing address. The meter number is also provided.
- **Billing Summary** This section provides an overview of account balances, current charges, date due and amount due.
- **Electric Usage Profile** This graph shows the average daily usage over the past 24 months. You can use this information to track and manage your electric use.
- **Shopping Information** You'll find information in this box to help you choose an electricity supplier. Your rate schedule and current supplier are listed, along with websites to visit for supplier offers. You can use the price to compare to help evaluate options from competitive generation suppliers. This price changes in June and December.
- **Monthly Usage Comparison** This table compares electric usage of the current month to the same month of the prior year.
- **Meter Read** This table shows meter reading information for the period associated with the current bill. This is your actual electricity usage for the billing period. We measure electricity usage in kilowatt hours (kWh).
- **Yearly Usage Comparison** This table compares the electric usage for the current year to the prior year.
- **Payment Methods** There are four convenient ways to pay your bill, each identified in this section, as well as an address for correspondence.
- **Account Information** The most important information regarding your bill is placed in an account summary box on the top of the bill and payment stub.
- **Payment Stub** Return the payment stub in the envelope provided.

PPL Bill

Your Message Center

- With paperless billing, you can receive and pay your PPL Electric Utilities bills online. The process is free, quick, convenient and secure. To learn more or sign up, visit pplelectric.com.
- Information about appliance energy use and tips on saving energy are available through the Energy Library on our Web site, pplelectric.com/e-power
- Before digging around your home or property, you should always call the state's One Call notification system to locate any underground utility lines. You can do this by simply dialing 811, which will connect you to the One Call system. Be safe and call 811 before you dig.
- Clean the lint filter on your dryer between loads. A clogged filter cuts air flow and wastes energy. A clean filter shortens drying time and saves money.
- Save postage and late charges - sign up for Automated Bill Payment.

General Information

Generation prices and charges are set by the electric generation supplier you have chosen. The Public Utility Commission regulates distribution rates and services. The Federal Energy Regulatory Commission regulates transmission prices and services.

PPL Electric Utilities uses about \$0.59 of this bill to pay state taxes and about \$2.47 is used to pay the PA Gross Receipts Tax.

Understanding Your Bill

Customer Charge - Monthly charge to recover costs of billing, meters and equipment.

Distribution Charge - Monthly charge to recover costs of local equipment used to deliver electricity from high-voltage transmission lines (see Transmission Charge) and safely step down voltage for use in your home or business.

System Improvement Charge - Monthly charge to recover costs for improving, repairing and replacing equipment that delivers electricity to your home or business.

kWh (Kilowatt-hour) - A measure of how much electricity your household uses. One kilowatt-hour equals the amount of electricity used by ten 100-watt lights left on for one hour.

Late Payment Charge - Charge added if you do not pay your bill by the due date.

Rate RS - Rate for service to a private home.

Enroll in Automatic Bill Pay (ABP) and your monthly electric payment will be automatically deducted from your account. To enroll, sign and date this form and return with your check payment (voided check not required). cashier and foreign checks do not qualify for enrollment.

I authorize PPL Electric Utilities to automatically deduct from the checking account as shown on my enclosed payments for the PPL Electric Utility bill account number listed on this payment stub. I will notify PPL Electric cancel this authorization.

Billing Details - (Bill Acct. 0000-0000)

Previous Balance
Payment Received Apr 20, 2015 - Thank You!

Balance as of Apr 21, 2015

Charges for - PPL Electric Utilities
Residential Rate: RS for Mar 18 - Apr 17
Distribution Charge:
Customer Charge
698 kWh at 3.52500000 per kWh
System Improvement Charge at 3.15%
PA Tax Adj Surcharge at -0.13300000%

Total Distribution Charges
Total Generation & Transmission Charges
(see Supplier Billing Details page)

Other Charges for PPL Electric Utilities

Late Payment Charge
Total of Other Charges

Amount Due By May 12, 2015

Account Balance

State Tax Adjustment Surcharge - Monthly reflect changes in various state taxes. The bill component.

Type(s) of Meter Readings:
Actual - Measures your monthly electricity reading.

PPL Bill

- **Your Message Center** This area displays important messages related directly to your account or service. Critical messages are noted with a red exclamation point.
- **General Information** Regulatory information regarding rates and charges associated with your bill.
- **Understanding Your Bill** Definitions of charges and items to help you understand your bill.
- **Billing Details** A detailed description of charges that make up your current bill. Charges are segmented by previous balances, supplier charges, PPL Electric Utilities charges and other charges.

PPL Bill



PPL Electric Utilities

Supplier Billing Details

| Bill Acct. No. | Due Date |
|----------------|--------------|
| 0000-0000 | May 12, 2011 |

These are the generation and transmission charges from your supplier(s). If you have questions, please contact them during that period.

| Supplier | Supplier Contact Information | Charges |
|--------------|---|---|
| Supplier ABC | <p>For questions on these charges, please contact this supplier at:</p> <p>Phone: 1-800-555-2222</p> <p>Supplier ABC Customer Services 1234 MAIN ST ANYTOWN, PA 18102</p> | <p>Charges for - Supplier ABC Generation & Transmission Charges for Mar 18 - Mar 22 ENERGY CHARGE 121KH@0.129 Total Supplier ABC Charges</p> |

| | | |
|------------|---|---|
| Supplier 2 | <p>For questions on these charges, please contact this supplier at:</p> <p>Phone: 1-800-555-2222</p> <p>Supplier 2 Customer Services 1234 MAIN ST ANYTOWN, PA 18102</p> | <p>Charges for - Supplier 2 Generation & Transmission Charges for Mar 23 - Apr 1 SUPPLY CHARGE: 577 kWh @ 0.08500 GROSS RECEIPTS TAX \$2.89 Total Supplier 2 Charges</p> |
|------------|---|---|

Total Generation & Transm

PPL Bill

- **Supplier Billing Information** You'll find detailed descriptions of your supplier charges on this page if you shop for electricity supply, along with the dates that supplier served you. Your supplier's address and phone number are also listed. If you have questions you can contact the supplier that served you during that time period.